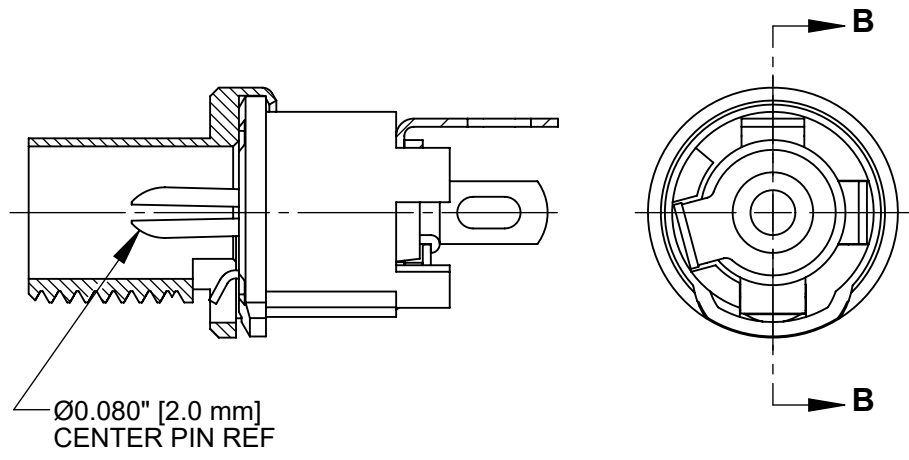
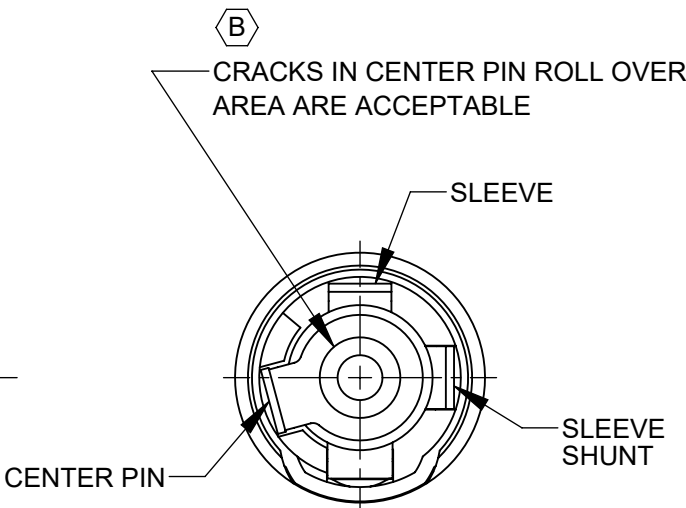
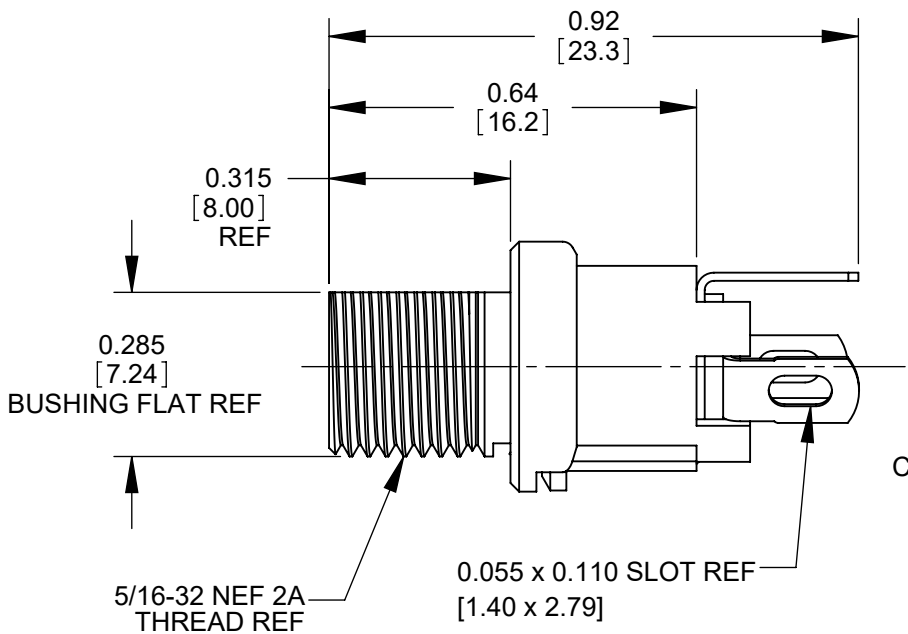
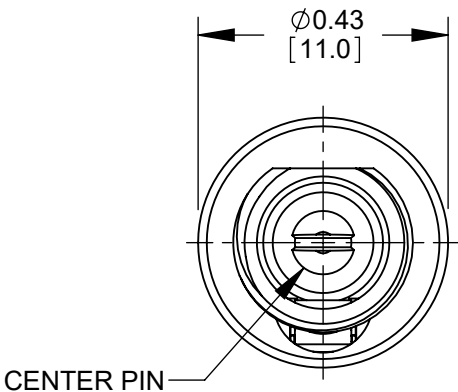
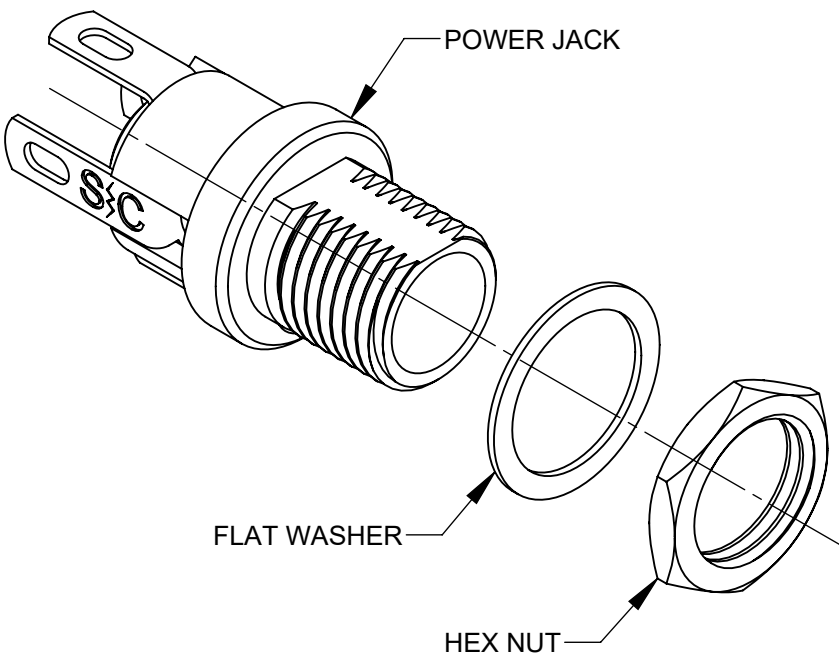
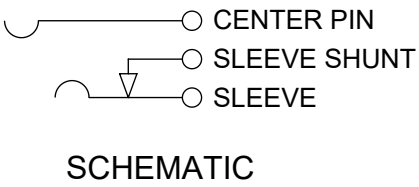


L712AH



L722AH



- NOTES:
- DIMENSIONS SHOWN FOR REFERENCE ONLY.
 - HEX NUT AND FLAT WASHER SUPPLIED UNASSEMBLED.
 - MATERIAL:
HOUSING, HEX NUT - COPPER ALLOY, NICKEL PLATED
INSULATOR HOUSING - THERMOPLASTIC, BEIGE
TERMINAL INSULATORS - PHENOLIC
FLAT WASHER - STEEL, NICKEL PLATED
PIN, SPRING, TERMINALS - COPPER ALLOY, SILVER PLATED
 - IT IS RECOMMENDED THAT THE JACK MOUNTING NUT BE TIGHTENED SNUG BY HAND BEFORE APPLYING A FINAL TIGHTENING TORQUE OF 8-10 LB-IN USING HAND TOOLS ONLY. POWER DRIVER OR IMPACT DRIVERS ARE NOT RECOMMENDED.
 - THESE PRODUCTS ARE RoHS COMPLIANT

CUSTOMER DRAWING

| | | | | | | | | | | | | | | | | | | | | | |
|-----------|------------|----------|----|------|--|--|-------|------|------|----------------------|----------|-------------------------|--------|--|-----|---------------|--|--|--|---|--|
| | | | | | <div>UNLESS OTHERWISE SPECIFIED</div> <div>1. ALL DIMENSIONS IN INCHES [mm]</div> <div>- TWO PLACE DECIMALS ±0.02 [0.5]</div> <div>- THREE PLACE DECIMALS ±0.005 [0.13]</div> | THIS DRAWING DESCRIBES A DESIGN CONSIDERED PROPRIETARY IN NATURE, DEVELOPED AND MANUFACTURED BY SWITCHCRAFT INC. AND IS RELEASED ON A CONFIDENTIAL BASIS FOR IDENTIFICATION PURPOSES ONLY. | | | | | | | | | | | | | | | |
| | | | | | | SIZE | WIDTH | | MULT | | LBS/M | | TEMPER | | | | | | | | |
| | | | | | | FINISH | | | | | | MATERIAL | | | | | | | | | |
| | | | | | | SPEC No. | | | | | | SPEC No. | | | | | | | | | |
| | | | | | | FIRST USED ON | | | | SCALE | | <div>Switchcraft®</div> | | | | | | | | | |
| | | | | | | | | | | 3:1 | | | | | | | | | | | |
| B | 28397 | 06/11/21 | PC | TJK | | DATE DRAWN | BY | CHKD | | APVD | | | | | | | | | | | |
| A | 27941 | 09/06/17 | PC | TJK | 6/27/16 | PNK | PNK | | SRC | | | | | | | | | | | | |
| REV | ECO NUMBER | DATE | BY | APVD | NAME | | | | | | PART No. | | | | REV | | | | | | |
| REVISIONS | | | | | DO NOT SCALE DRAWING | | | | | HT POWER JACKS | | | | | | L712AH L722AH | | | | B | |
| | | | | | | | | | | L712AH, L722AH, RoHS | | | | | | | | | | | |