

NOTES:

1.  $\text{C}$  REPRESENTS A CRITICAL DIMENSION.
2. ALL DIMENSIONS TO BE ABOUT CL WITHIN  $\pm 0.005$  [0.13].
3. MINIMUM PUSHOUT FORCE: 3 lbs.
4. MAXIMUM CUT FLASH: .020 [0.50].
5. MEASURE FROM THE TIPS OF THE TERMINALS.
6. MEASURE AT BOTH ENDS OF PART.
7. PARTS TO BE PACKAGED IN TUBES FOR 4-50 POSITIONS (.100 [2.54] PITCH) OR 2-25 POSITIONS (.200 [5.08] PITCH), OTHERWISE BULK PACKAGED.

DO NOT  
SCALE FROM  
THIS PRINT

BTSW-XXX-XX-X-S-XX-XX

TERMINAL SPACE

- 1: .100 [2.54] (FILL EVERY POSITION)
- 2: .200 [5.08] (FILL EVERY OTHER POS STARTING AT -01 AND ENDING IN LAST POS)

NO OF POSITIONS

- 1: -01 THRU -50
- 2: -02 THRU -25 (SEE FIG. 3, SHEET 2)

TERMINAL SPECIFICATION

- 01: .050 [1.27] PROFILE
- \*-02: .060 [1.52] PROFILE (SEE TABLE 1)

POLARIZATION  
XX INDICATES POSITION  
TO BE OMITTED; LEAVE  
BLANK FOR NO OPTION

OPTIONS

- LL: LOCKING LEAD (SEE FIG. 2, SHEET 2)

ROW SPECIFICATION

- S: SINGLE

PLATING SPECIFICATION

(VALUES GIVEN ARE IN MICRO-INCHES)  
-T: MATTE TIN CONTACT AND TAIL  
-F: FLASH GOLD, 3 Au / 50 Ni MIN (USE T-1S6-XX-GF-2)

\* = NOT RELEASED

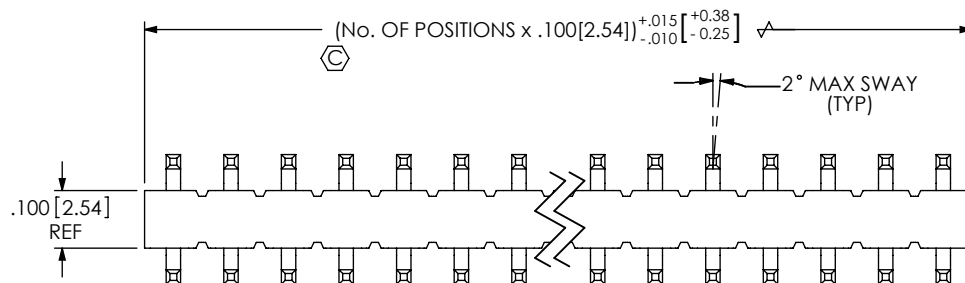
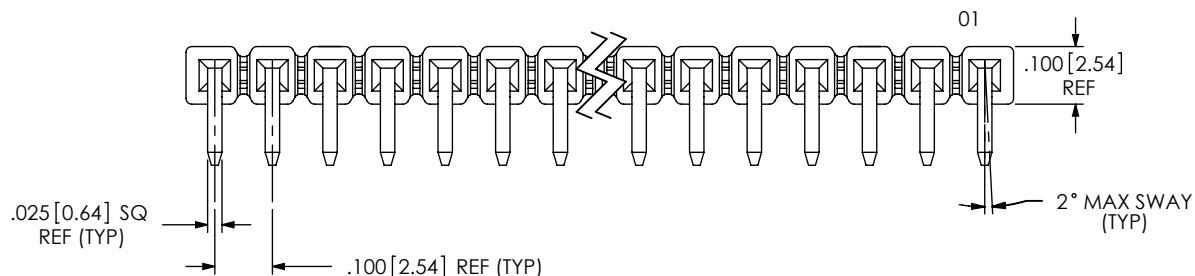


FIG 1  
BTSW-1XX-XX-X-S SHOWN

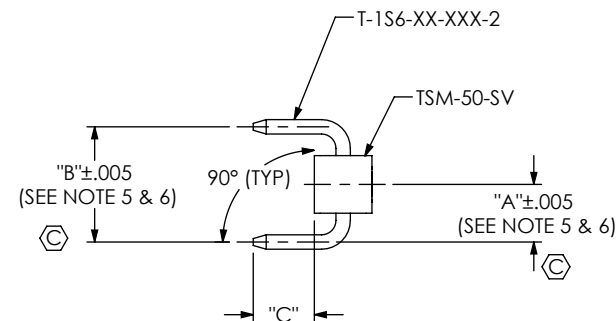


TABLE 1				
XX	TERMINAL	"A"	"B"	"C"
-01	T-1S6-17-XXX-2	.100 [2.54]	.200 [5.08]	.106 [2.69]
*-02	T-1S6-08-XXX-2	.110 [2.79]	.220 [5.59]	.120 [3.05]

\* = NOT RELEASED

UNLESS OTHERWISE SPECIFIED,  
DIMENSIONS ARE IN INCHES.  
TOLERANCES ARE:  
DECIMALS ANGLES  
.XX:  $\pm 0.1$  [.3] 2°  
.XXX:  $\pm 0.005$  [.13]  
.XXXX:  $\pm 0.0020$  [.051]

PROPRIETARY NOTE  
THIS DOCUMENT CONTAINS INFORMATION  
CONFIDENTIAL AND PROPRIETARY TO  
SAMTEC, INC. AND SHALL NOT BE REPRODUCED  
OR TRANSFERRED TO OTHER DOCUMENTS OR  
DISCLOSED TO OTHERS OR USED FOR ANY  
PURPOSE OTHER THAN THAT WHICH IT WAS  
OBTAINED WITHOUT THE EXPRESSED WRITTEN  
CONSENT OF SAMTEC, INC.

**samtec**

520 PARK EAST BLVD, NEW ALBANY, IN 47150  
PHONE: 812-944-6733 FAX: 812-948-5047  
e-Mail info@SAMTEC.com code 55322

MATERIAL:  
BODIES:  
LCP UL94VO, COLOR: BLACK  
TERMINALS:  
PHOSPHOR BRONZE

F:\DWG\MISC\MKTG\BTSW-XXX-XX-X-S-XX-XX-MKT.SLDDRW

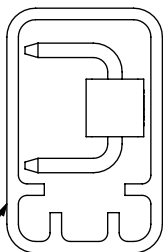
DO NOT SCALE DRAWING SHEET SCALE: 3:1

DESCRIPTION:  
.025 [.64] SQ. SINGLE ROW, DOUBLE -RA POST ASM

DWG. NO.  
BTSW-XXX-XX-X-S-XX-XX

BY: J. BROWNING 04/27/2010 SHEET 1 OF 2

TUBE VIEW



PT-1-24-01-60 (USE TP-03)  
(SEE NOTE 7)

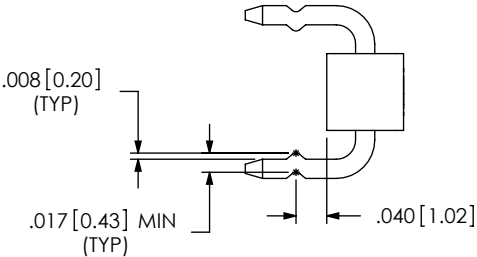
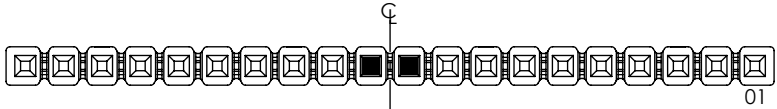
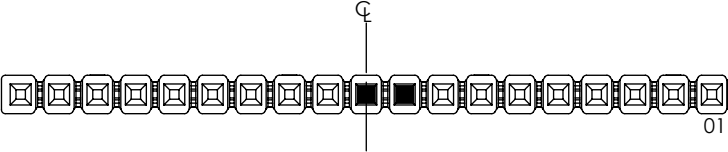


FIG. 2  
BSW-1XX-XX-X-S-LL SHOWN  
(SAME AS FIG. 1 EXCEPT AS SHOWN)



ODD POSITION PART



EVEN POSITION PART

LOCKING LEAD OPTION  
■ = CRIMP LOCATION

IF CRIMP POSITION IS POLARIZED, MOVE ONE POSITION TOWARD PIN 1

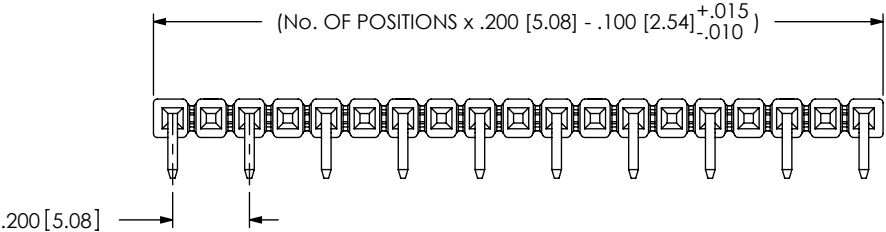
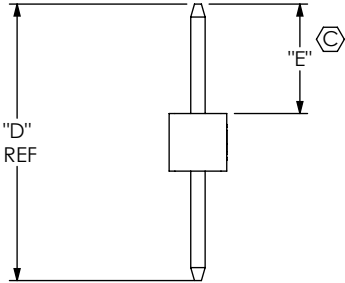


FIG 3  
BSW-210-XX-X-S SHOWN  
(SAME AS FIG 1 EXCEPT AS SHOWN)



IN-PROCESS 1

TABLE 2				
XX	TERMINAL	"D"	"E"	
-01	T-1S6-17-XXX-2	.480[12.19]	.190[4.82]	
*-02	T-1S6-08-XXX-2	.530[13.46]	.215[5.46]	

\* = NOT RELEASED

F:\DWG\MISC\MKTG\BSW-XXX-XX-X-S-XX-XX-MKT.SLDDRW

**PROPRIETARY NOTE**  
THIS DOCUMENT CONTAINS INFORMATION  
CONFIDENTIAL AND PROPRIETARY TO  
SAMTEC, INC. AND SHALL NOT BE REPRODUCED  
OR TRANSFERRED TO OTHER DOCUMENTS OR  
DISCLOSED TO OTHERS OR USED FOR ANY  
PURPOSE OTHER THAN THAT WHICH IT WAS  
OBTAINED WITHOUT THE EXPRESSED WRITTEN  
CONSENT OF SAMTEC, INC.

DO NOT SCALE DRAWING

SHEET SCALE: 3:1

520 PARK EAST BLVD, NEW ALBANY, IN 47150  
PHONE: 812-944-6733 FAX: 812-948-5047  
e-Mail info@SAMTEC.com code 55322

DESCRIPTION:  
.025 [.64] SQ. SINGLE ROW, DOUBLE -RA POST ASM

DWG. NO.  
**BSW-XXX-XX-X-S-XX-XX**

BY: J. BROWNING 04/27/2010 | SHEET 2 OF 2