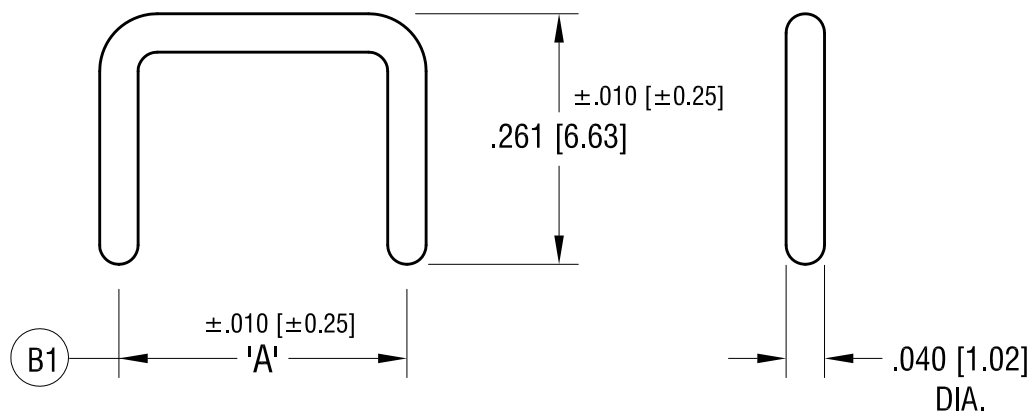


**ACTUAL SIZE**  
**P/N 1430-2**



PART NO.	±.010 [±0.25] 'A' MTG. CTRS
1430-1	.200 [5.08]
1430-2	.250 [6.35]
1430-3	.300 [7.62]
1430-4	.400 [10.16]
1430-5	.500 [12.70]

8.09.23	(B1) TOLERANCE WAS ±.005 CHANGE AS PER ECN 23-135	B
12.05.13	C/M SPLIT TO 'C' & 'M' CHANGE AS PER ECN 13-108	A
DATE	DESCRIPTION	REV.

<b>KEYSTONE ELECTRONICS CORP.</b>			
www.keyelco.com • NEW HYDE PARK NY 11040 • Tel (516)328-7500			
PART NAME NON-INSULATED SHORTING PIN			
MATERIAL .040 [1.02] DIA. BRASS			
FINISH GOLD PLATE		DRN BY BOONE	DATE 7.02.07
		APP'D <b>MR</b>	SCALE 5X
TOLERANCES DECIMAL ANGULAR ± 1° UNLESS OTHERWISE SPECIFIED	INCH [MM] ± .005 [± 0.13]	CODE C	DWG NO. <b>1430-</b>

# Mouser Electronics

Authorized Distributor

Click to View Pricing, Inventory, Delivery & Lifecycle Information:

[Keystone Electronics:](#)

[1430-1](#)